

Quick Solution for Application Protection

How to Use USB Flash as

Protecton/ Licensing Device

Contact

Developed and Marketed By

Innovative Matrix Softech Pvt. Ltd.

Email: support@isohelpline.com

Web: www.SoftwareFileProtection.com

Add: [7005, 7th Floor, Emerald House,
Sarojini Devi Road, Next to Parklane Hotel, Near State bank of Mysore, Paradise Circle,
Hyderabad / Secunderabad- 500 003 India](#)

Contents

- Contact 2
- Contents 3
- License Agreement..... 4
- How it works 7
- How to get License..... 8
- Create / Modify Virtual Drive..... 10
- Create Installer..... 15
- Problems in Installation? 18

License Agreement

Note: You cannot share the product referred herein. You cannot sale or resale the product referred herein.

IMPORTANT - READ CAREFULLY BEFORE DOWNLOADING, INSTALLING OR COPYING TO YOUR COMPUTER ANY FILE(S) CONTAINED HEREWITH.

THE FILE(S) AND OTHER INFORMATION PROVIDED HEREWITH ARE COPYRIGHTED. BY DOWNLOADING ANY FILE PROVIDED HEREWITH TO YOUR COMPUTER, YOU ARE ACCEPTING AND AGREEING TO THE TERMS OF THIS LICENSE AGREEMENT. IF YOU ARE NOT WILLING TO BE BOUND BY THE TERMS OF THIS LICENSE AGREEMENT, PRIOR TO DOWNLOADING OR COPYING ANY FILE(S) TO YOUR COMPUTER, YOU MUST DECLINE ACCESS TO SUCH MATERIALS.

1. GRANT OF LICENSE: Subject to the provisions contained herein and to the payment of all applicable fees, the Innovative Matrix Softech Private Limited grants you a non-exclusive, non-transferable license to the materials contained herewith (the "Product"). Your licensed rights to the Product are limited to the following:

(a) This License Agreement does not convey to you an interest in or to the Product, but only a limited right of use revocable in accordance with the terms of this License Agreement.

(b) You may install one copy of the Product on, and permit access to it by, a single computer owned, leased or otherwise controlled by you. In the event that computer becomes dysfunctional, such that you are unable to access the Product, you may transfer the Product to another computer, provided that the Product is removed from the computer from which it is transferred and the use of the Product on the replacement computer otherwise complies with the terms of this Agreement. Neither concurrent use on two or more computers nor use in a local area network or other network is permitted. You shall not print, merge, adapt, translate, modify, rent, lease, sell, sublicense, assign or otherwise transfer any of the Product, or remove any proprietary notice or label appearing on any of the Product. You may copy the Product only for backup purposes.

(c) You acknowledge and agree that the Product is proprietary to the Copyright holder, INNOVATIVE MATRIX SOFTECH PRIVATE LIMITED, and is protected under Indian copyright law and international copyright treaties. You further acknowledge and agree that all rights, title and interest in and to the Product, including all intellectual property rights, are and shall remain with Innovative Matrix Softech Private Limited.

(d) You shall provide INNOVATIVE MATRIX SOFTECH PRIVATE LIMITED or any designee of INNOVATIVE MATRIX SOFTECH PRIVATE LIMITED with all information necessary to assure compliance with the terms of this Agreement. In the event you are not in compliance with the terms of this Agreement through the actions of unrelated third parties, you shall use your best efforts to cooperate with INNOVATIVE MATRIX SOFTECH PRIVATE LIMITED and any of its designees to assure compliance.

2. LIMITED WARRANTY:

(a) INNOVATIVE MATRIX SOFTECH PRIVATE LIMITED warrants for your benefit alone that, unless disclosed in the Product to the contrary, INNOVATIVE MATRIX SOFTECH PRIVATE LIMITED can license the Product and all copyright and trademarks related thereto or therein.

(b) THE EXPRESS WARRANTIES SET FORTH IN THIS SECTION 2 CONSTITUTE THE ONLY WARRANTIES WITH RESPECT TO THE PRODUCT AND INNOVATIVE MATRIX SOFTECH PRIVATE LIMITED MAKES NO OTHER REPRESENTATION OR WARRANTY OR CONDITION OF ANY KIND, WHETHER EXPRESS OR IMPLIED (EITHER IN FACT OR BY OPERATION OF LAW) WITH RESPECT TO ANY OF THE PRODUCT, INCLUDING, WITHOUT LIMITATION, WITH RESPECT TO THE SUFFICIENCY, ACCURACY OR UTILIZATION OF, OR ANY INFORMATION OR OPINION CONTAINED OR REFLECTED IN, ANY OF THE PRODUCT. INNOVATIVE MATRIX SOFTECH PRIVATE LIMITED EXPRESSLY DISCLAIMS ALL WARRANTIES OR CONDITIONS OF MERCHANTABILITY OR FITNESS FOR A PARTICULAR PURPOSE. NO OFFICER, DIRECTOR, EMPLOYEE, MEMBER, AGENT, REPRESENTATIVE OR PUBLISHER OF THE COPYRIGHT HOLDER IS AUTHORIZED TO MAKE ANY MODIFICATION, EXTENSION, OR ADDITION TO THIS LIMITED WARRANTY.

3. INDEMNIFICATION: INNOVATIVE MATRIX SOFTECH PRIVATE LIMITED, any agent, representative, publisher or distributor of the Product, or any of their respective directors, officers, employees, agents, representatives or members (the "INNOVATIVE MATRIX SOFTECH PRIVATE LIMITED Indemnified Parties") shall have no liability for, and you shall defend, indemnify and hold each of the INNOVATIVE MATRIX SOFTECH PRIVATE LIMITED Indemnified Parties harmless from and against, any claim, loss, demand, liability, obligation and expenses (including reasonable attorneys' fees) based upon or arising out of any injury or damage, or any product liability claim, including but not limited to, any personal or bodily injury or property damage, arising out of, pertaining to, or resulting in any way from, the use or possession of any of the Product by you and/or any of your directors, officers, employees, representatives, agents or contractors.

4. LIMITATION OF LIABILITY:

(a) You acknowledge that each of INNOVATIVE MATRIX SOFTECH PRIVATE LIMITED's obligations and liabilities with respect to the Product are exhaustively defined in this Agreement. You are responsible for the consequences of any use of any of the Product (whether or not such use was consistent with the license granted hereunder) created therefrom. Whether or not INNOVATIVE MATRIX SOFTECH PRIVATE LIMITED has been advised of their possibility, neither INNOVATIVE MATRIX SOFTECH PRIVATE LIMITED nor any of its representatives or agents, directors, officers, employees, or members, shall be liable, whether under contract, tort (including negligence) or otherwise, for any indirect, special, punitive, incidental or consequential loss, damage, cost or expense of any kind whatsoever and howsoever caused, that may be suffered by you or any of your directors, officers, employees, agents, representatives or contractors or any third party.

(b) If at any time an allegation of infringement of any rights of any third party is made, or in INNOVATIVE MATRIX SOFTECH PRIVATE LIMITED's opinion is likely to be made, with respect to any of the Product, INNOVATIVE MATRIX SOFTECH PRIVATE LIMITED may, at its option and at its own expense (i) obtain for you the right to continue using the Product, (ii) modify or replace the Product or any portion thereof so as to avoid any such claim of infringements, or (iii) refund to you the License Fee. INNOVATIVE MATRIX SOFTECH PRIVATE LIMITED shall have no liability to you if any claim of infringement would have been avoided except for your refusal to use any modified or replacement Product supplied or offered to be supplied pursuant to this Section 4(b) or to otherwise cease using the Product. Notwithstanding anything contained in this Agreement, and except as set forth in Section 4(b) hereof, INNOVATIVE MATRIX SOFTECH PRIVATE LIMITED's liability to you for damages pursuant to this Section 4(b), if any, shall not exceed the amounts of the License Fee paid by you for the Product subject to any such claim.

(c) Section 4(b) state the entire liability of INNOVATIVE MATRIX SOFTECH PRIVATE LIMITED with respect to the infringement or alleged infringement of any third party rights of any kind whatsoever by any of the Product.

5. TERMINATION: This Agreement may be terminated immediately by INNOVATIVE MATRIX SOFTECH PRIVATE LIMITED upon breach of any provision of this Agreement by you. Upon any termination of this Agreement, you shall immediately discontinue the use of the Product and shall within ten (10) days either return file(s) on diskette(s), if any,

to INNOVATIVE MATRIX SOFTECH PRIVATE LIMITED or certify in writing to INNOVATIVE MATRIX SOFTECH PRIVATE LIMITED that the Product has been deleted from your computer and is eliminated from your premises.

6. GOVERNING LAW; ATTORNEY'S FEES: This Agreement shall be governed by the laws of the Republic of India without reference to its conflict of laws and provisions and you further consent to jurisdiction by the state and federal courts sitting in the state of Andhra Pradesh, India.

7. MISCELLANEOUS: This Agreement constitutes the complete and exclusive agreement between INNOVATIVE MATRIX SOFTECH PRIVATE LIMITED and you with respect to the subject matter hereof, and supersedes all prior oral or written understandings, communications or agreements not specifically incorporated herein. This Agreement may not be modified except in writing duly signed by an authorized representative of INNOVATIVE MATRIX SOFTECH PRIVATE LIMITED and you. If any provision of this Agreement is held to be unenforceable for any reason, such provision shall be reformed only to the extent necessary to make it enforceable, and such decision shall not affect the enforceability (i) of such provision under other circumstances, or (ii) of the remaining provisions hereof under all circumstances. Headings shall not be considered in interpreting the Agreement.

8. EXPORT: You cannot load or export or re-export any of the Product or any underlying information or technology without prior consent from the Innovative Matrix Softech Private Limited. You may not load or export or re-export any of the Product or any underlying information or technology except in full compliance with all applicable laws of republic of India and other applicable laws and regulations.

9. By agreeing to this license agreement, you also agree to general terms and conditions given on our website www.isohelpline.com (either on home page or product related pages)

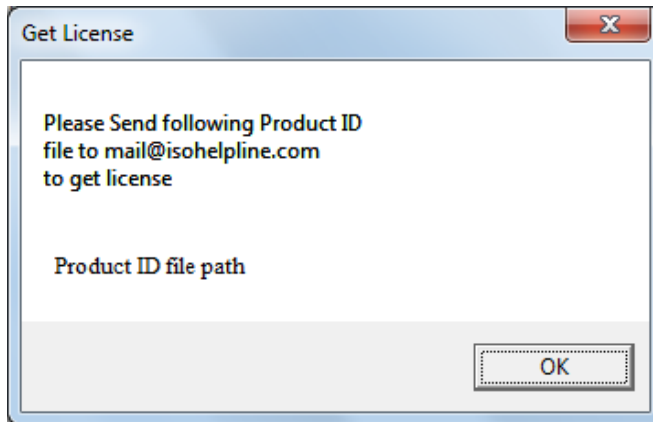
BY ACCESSING THE PRODUCT, YOU ACKNOWLEDGE THAT YOU HAVE READ THE TERMS OF THIS LICENSE AGREEMENT AND AGREE TO BE BOUND BY ITS TERMS.

How it works:

- Your Software EXE and other related files and folders are placed inside a protected file (like zip file).
- This protected file is AES 256 encrypted
- The protected file is mounted as z:/ drive on user system and your program is run by our protected usb launcher.
- An encryption driver is required for which installer is copied in the flash drive when cabinet file is made.
- The software runs with USB flash drive only on which license is created.

How to get License:

- First install USB Protected Software Management Tool Setup.
- Start USB Protected Software Management Tool first time you will get following message.



You will get one product ID file at location (..\ Documents\USB Protected Software\USB_Protected_Software_ProductID.dp)

- Send **USB_Protected_Software_ProductID.dp** file to mail@isohelpine.com then you will get license file from us.
- We will send you License.dp file. Copy License.dp file to USB Protected Software Management Tool installation location.
- USB Protected Software Management Tool is start now.

Steps:

There are two steps in USB Protected Software Management Tool.

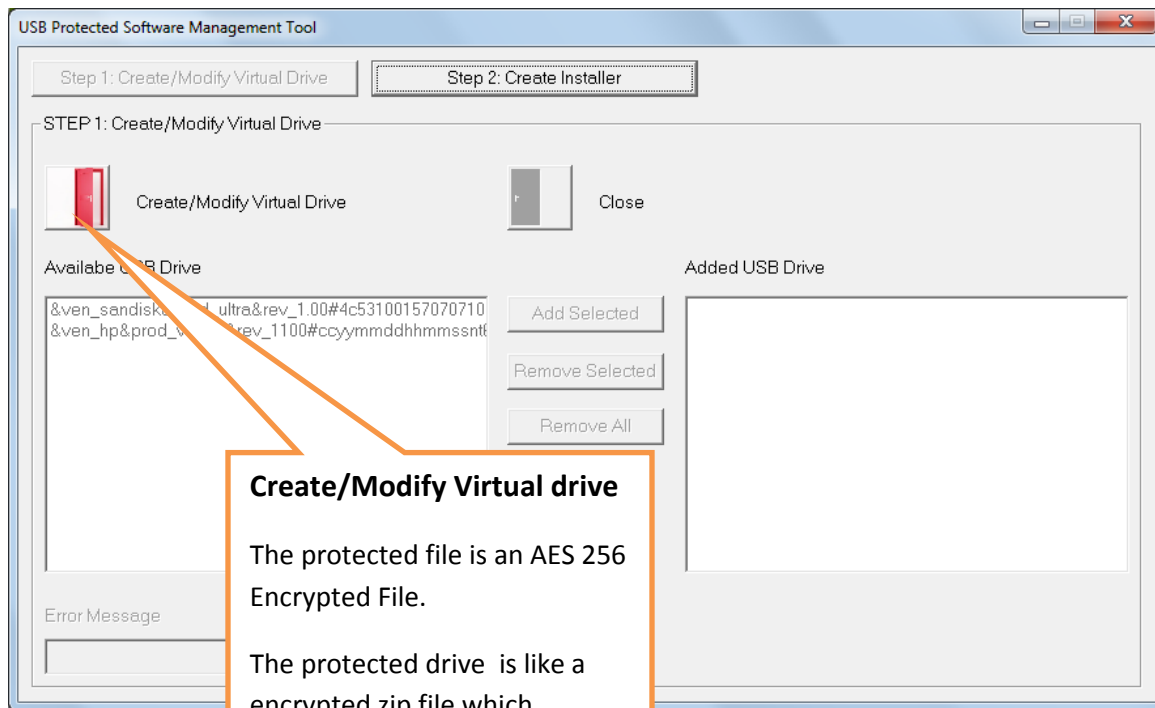
1. Create/Modify Virtual drive.
2. Create installer.

STEP 1: Create/Modify Virtual drive

- Open “**USB Protected Software Management Tool**”.
- Now you can see an icon named as “Create/Modify Virtual drive” click on the icon.
- If you want to create a new protected drive then select or create an **empty folder** and click ok or if want to modify the protected drive use the folder in which you saved it earlier.
- A window will pop out. Enter the display name as the software name and enter the storage size at least **double** the size of the files in the software and click ok.
- Now open your “my computer” and you can see a **Protected Drive (z:)**.
- Copy your software program and all other required files in **Protected Drive**.
- **rename your program.exe as index.exe.**
- Insert a USB Drives.
- Inserted drives will be shown in “Available USB Drive” column.
- Select the drives and click on “Add Selected”.
- Added drives will be shown in “Added USB drive”.
- Enter an error message and click on “Save”.
- Close the protected drive.

Put your software in drive and not in a sub-folder.

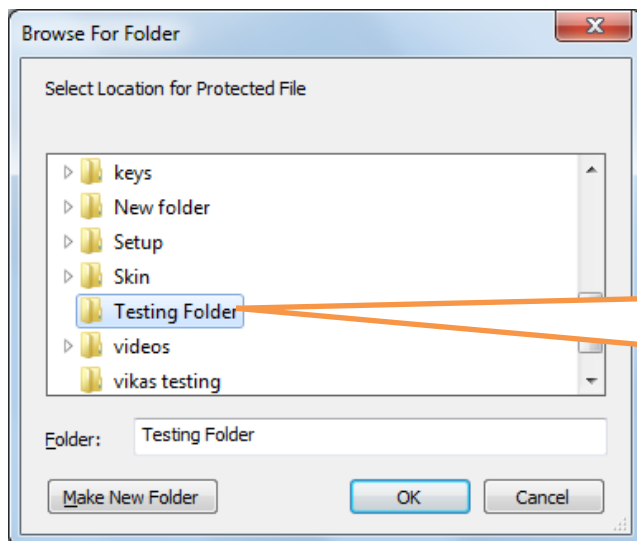
You software EXE file should be **renamed to index.exe** and accessible as **z:\index.exe**



Create/Modify Virtual drive

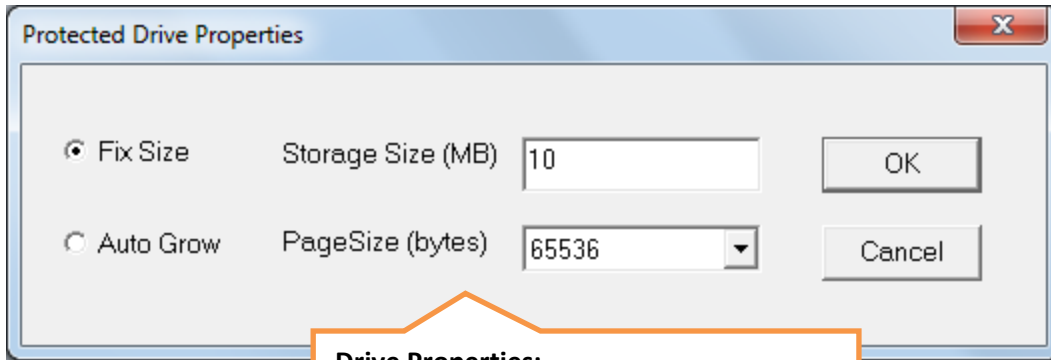
The protected file is an AES 256 Encrypted File.

The protected drive is like a encrypted zip file which mounts as a Z: drive in



Select Folder

Select location for your protected File.



Drive Properties:

Storage Size:

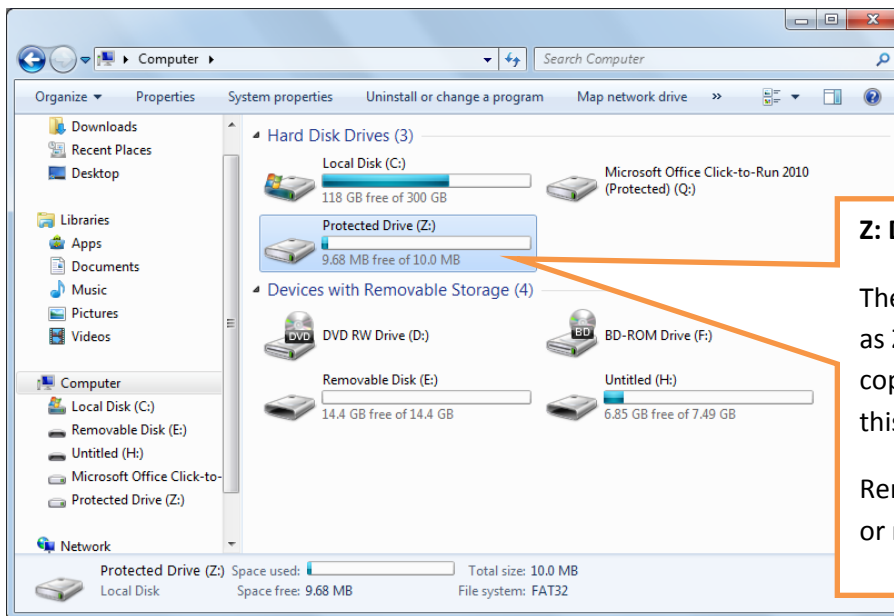
Make it twice that of your total file size.

Page Size: Default is good. No need to change.

Auto Grow:

Suitable if you will be creating new data in the cabinet while running software.

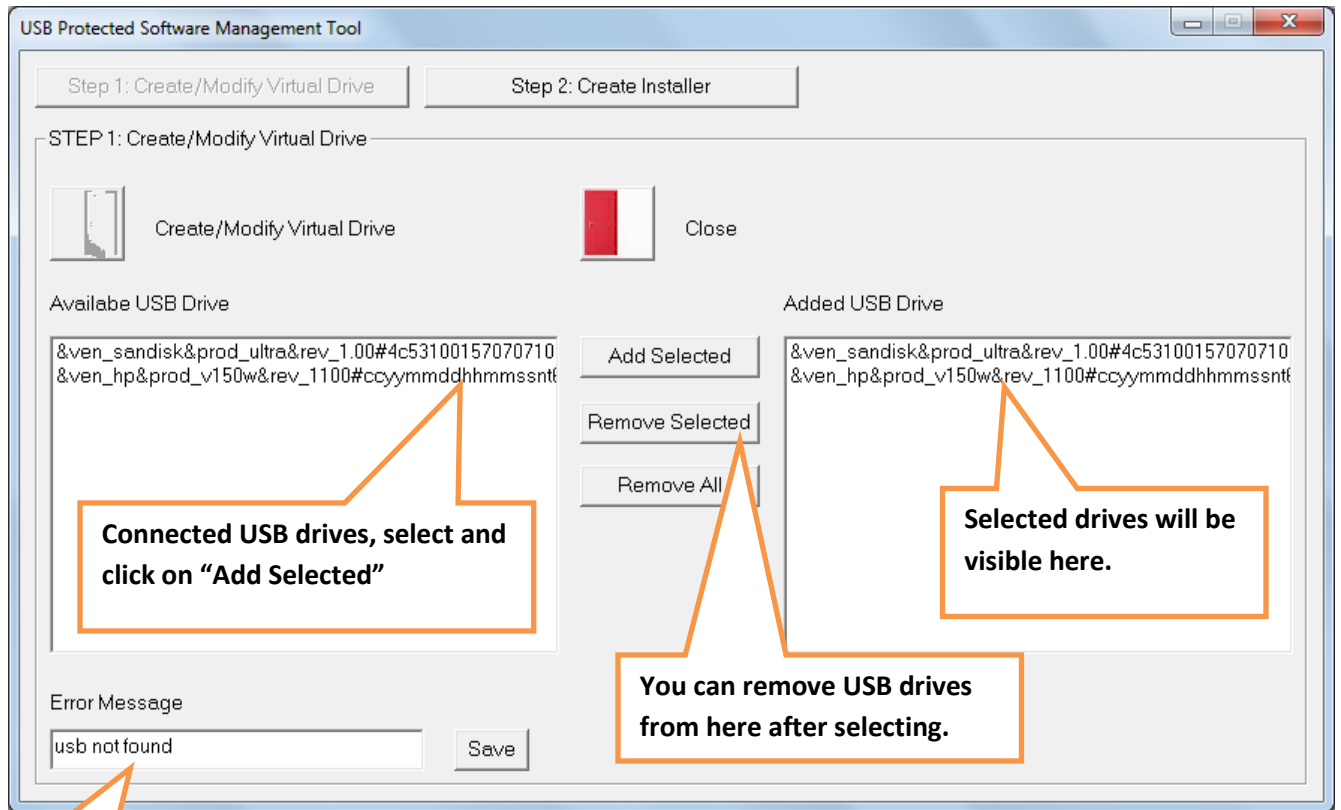
Not suitable for videos.



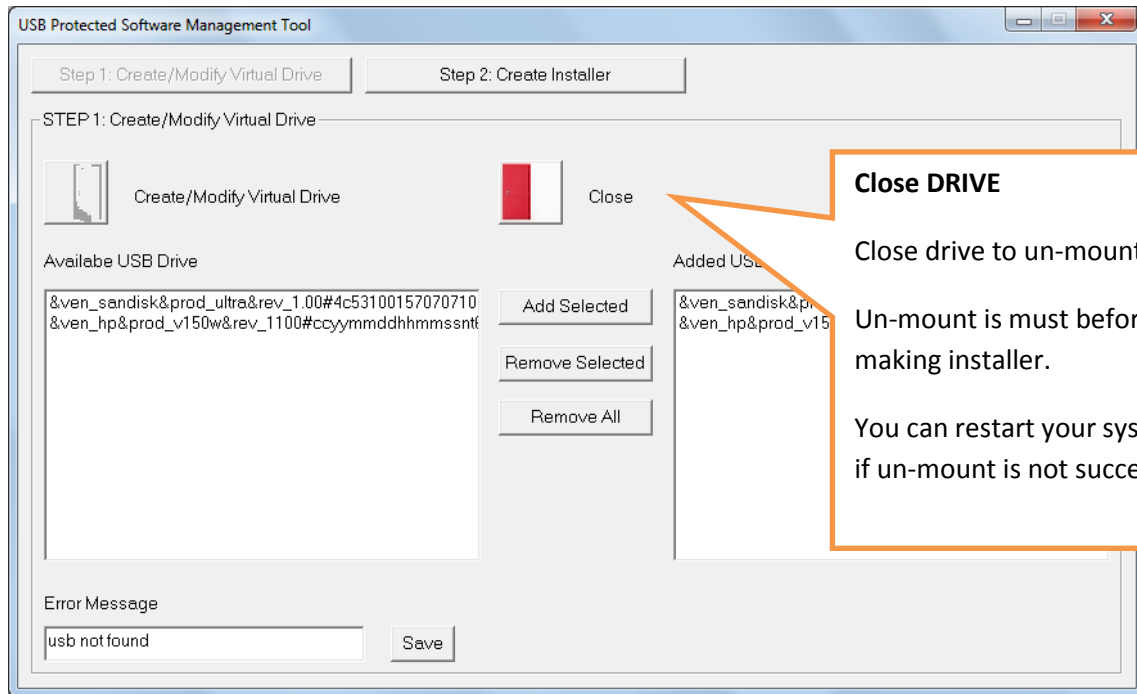
Z: DRIVE

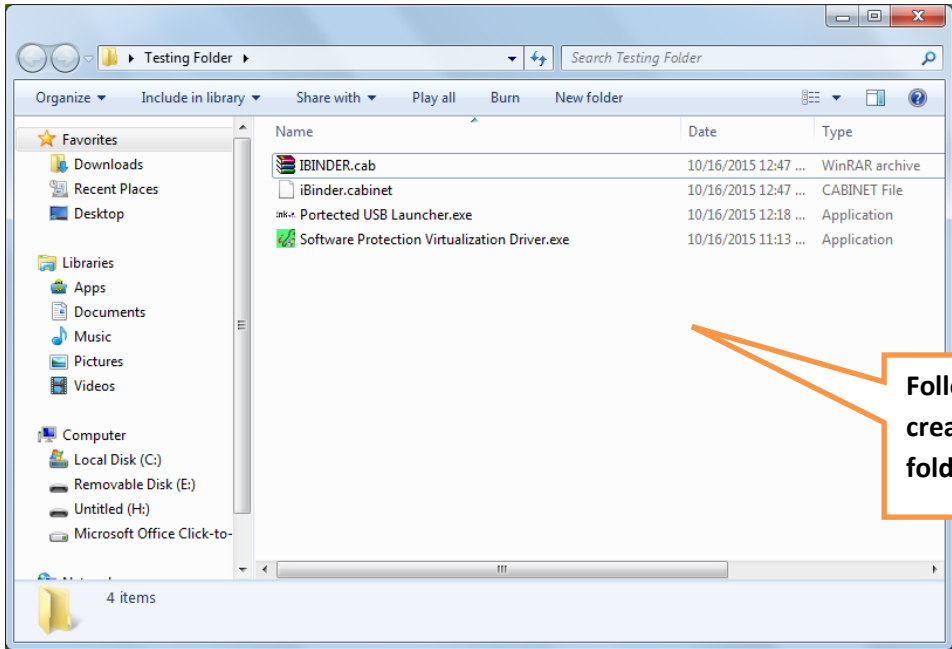
The protected file will mount as Z: drive and you should copy your entire software in this drive.

Rename your software EXE or main EXE to index.exe.



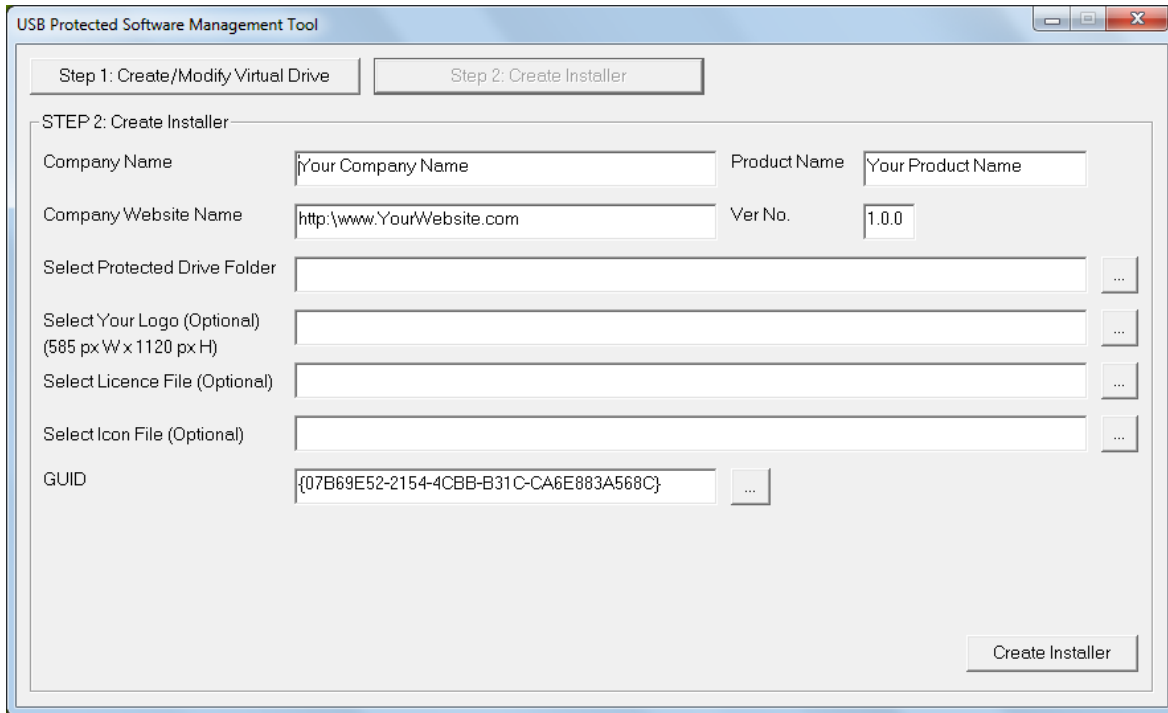
You can give Custom Error message here and click Save.





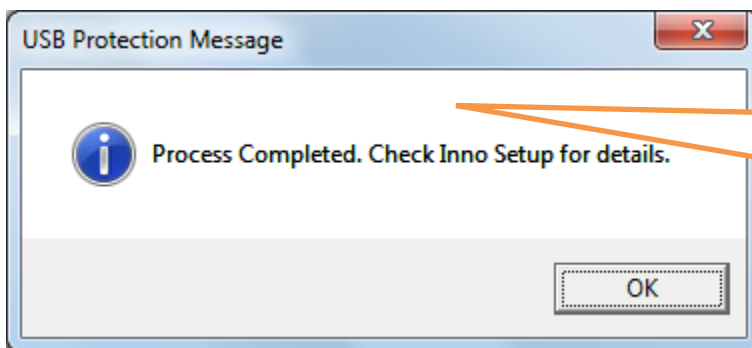
STEP 2: Create Installer

- The last step is creating installer, which you will give to your customers.
- First enter the name of your company, and then enter the name of your software, your website, version no of your software.
- Then enter the path of the folder in which you created the protected file, as Protected Drive folder.
- Next you can give logo of your software, you should resize image of your software to (585px w by 120 px h).
- You can give license agreement of your company, to which the users have to agree.
- You can give icon for your software which will be displayed during installation.
- Note that you can also create the installer without selecting logo, license file, icon file as they are not mandatory.
- Now click on **“Create Installer”** and wait till the installation is completed as it may take some time, after its completion you will get success message.



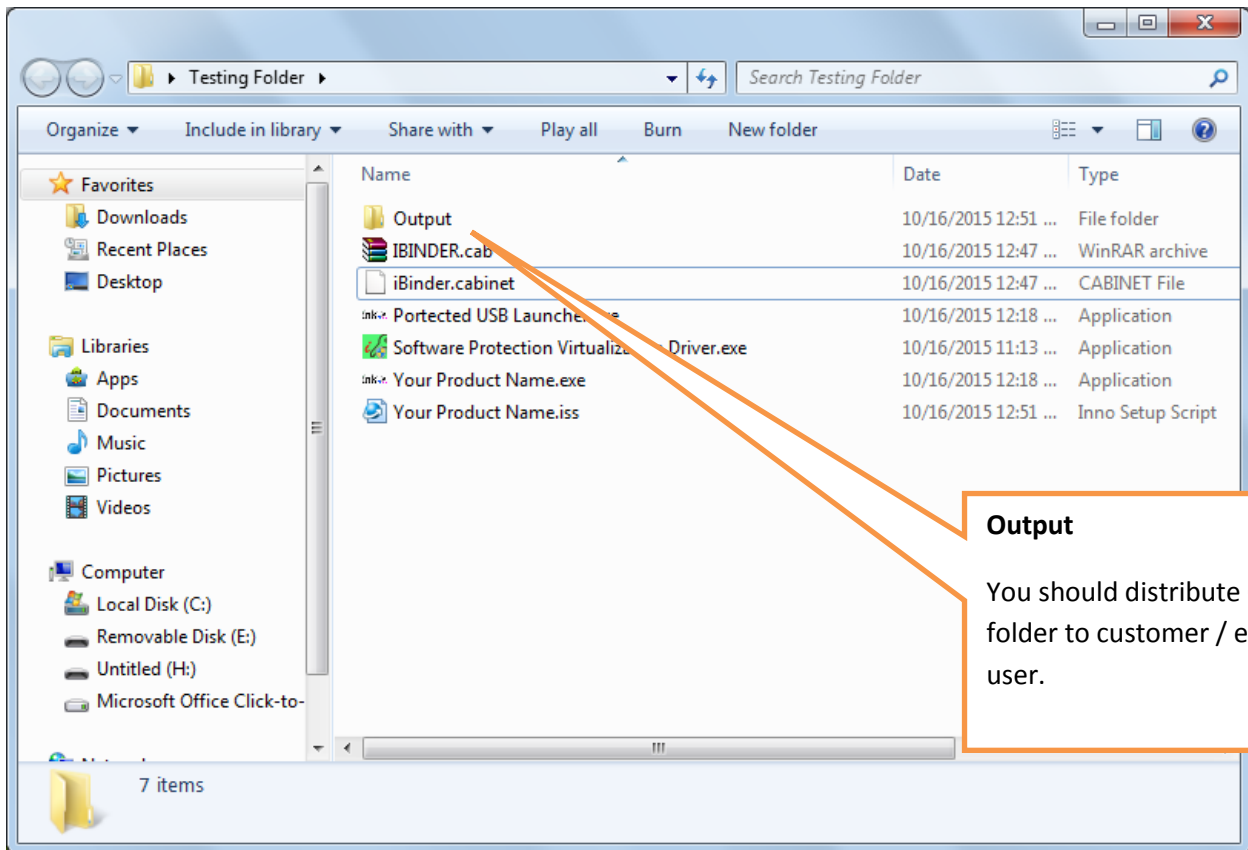
- Installer uses InnoSetup for creating installer.
- Installation related errors will be displayed in the Innosetup.
- InnoSetup will also display progress.
- For more customizations refer InnoSetup documentation online.

Wait for Completion Message:



Success

Installer may take some time. Wait for Success message.



Note:

- **Now DISTRIBUTE just Installer created in OUTPUT folder shown above.**
- If you are using third party tools in your software, you may need to install those also separately on end user machine user.

Problems in Installation ?

- If you face any problem in Installation, make sure that your internet connection is on because InnoSetup needs internet connection to download some files.
- Download InnoSetup Directly from <http://www.jrsoftware.org/isdl.php> choose {isetup-5.5.6.exe} or later as may be available and install.